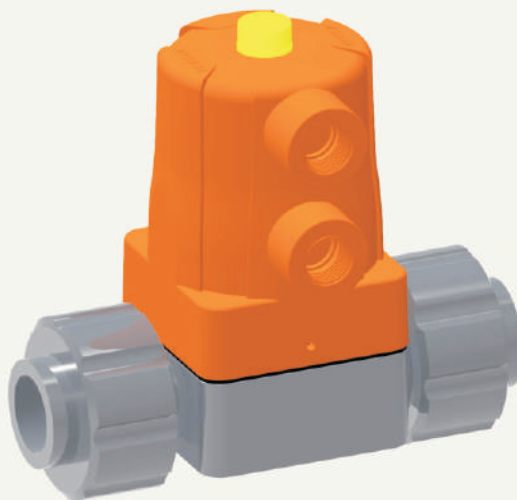


Pneumatic diaphragm valve MV300

High performance Low cost



MV300 economic diaphragm valve has a compact one-piece pneumatic actuator structure, and the unique duckbill runner design ensures the best flow capacity. Under the premise of corrosion resistance, We have a variety of materials to ensure cost-effective applications.

Easy installation and maintenance

- * All-in-one compact design ensures the installation in limited space
- * All-plastic appearance is beautiful and corrosion resistant
- * Embedded diaphragm design to make the force uniform and prolong life
- * Super lubricating property, maintenance-free
- * Same sizes and installation length as international brands products
- * Integrated visual position feedback and easy to observe

High safety performance

- * Over pressure margin design of valve body and pneumatic actuator to ensure safety application
- * A variety of materials are available to resistant to high temperature and corrosion
- * The curved channel can ensure the effective closing of the valve in the application of high flow rate
- * Diaphragm compressor is high temperature resistant, which improves sealing performance

High Flexibility

- * True union connection, G thread
- * DIN, JIS and ANSI standards are available
- * Diaphragms are available for EPDM, FPM and EPDM-PTFE
- * Bodies are available for PVC-U, PVC-C, PP-H and PVDF
- * High quality and reliability for high operation times

The best flow performance

- * Superior flow channel makes the linear characteristics of the fluid more precise and controllable
- * The smooth and excessive curved channel has smaller pressure loss, and brings double flow capacity compared with the traditional diaphragm valve
- * Suitable for liquids with small amounts of particles and solids

Technical characteristics

Size DN 15、G 3/8、Flare LINK 3/4

Operating pressure PN 6

Body material PVC-U
PVC-C
PP-H
PVDF

Diaphragm EPDM
EPDM-PER
FPM
FPM-70
EPDM-PTFE

Shell PP-GF Orange

Connector Union
Thread
Flare LINK

Flow Double flow capacity

Standard DIN 8063
ISO 9393

Flow capacity

All data are for 20°C water with 1 bar pressure difference

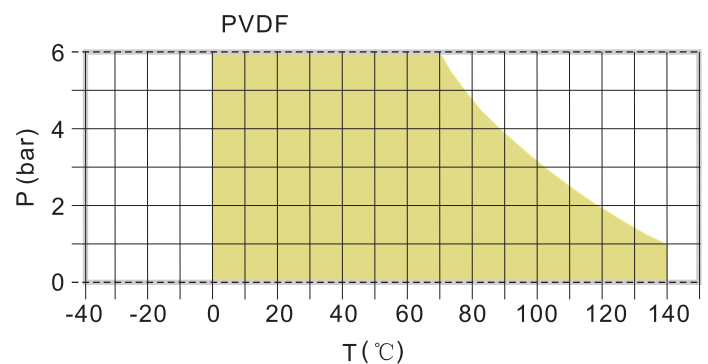
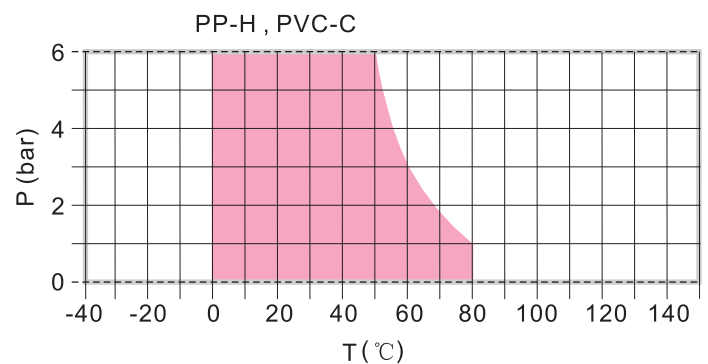
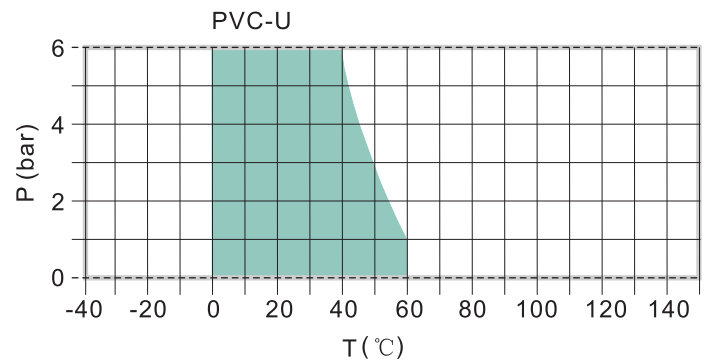
Material	DN	d	inch	Kv 100	
				l/min	m ³ /h
PVC-U	15	20	1/2"	125	7,5
PVC-C	15	20	1/2"	125	7,5
PP-H	15	20	1/2"	125	7,5
PVDF	15	20	1/2"	125	7,5

$$C_v = k_v \times 0,07 ; F_v = k_v \times 0,0585$$

Kv (l/min) ; Cv (gal/min) US ; Fv (gal/min) GB

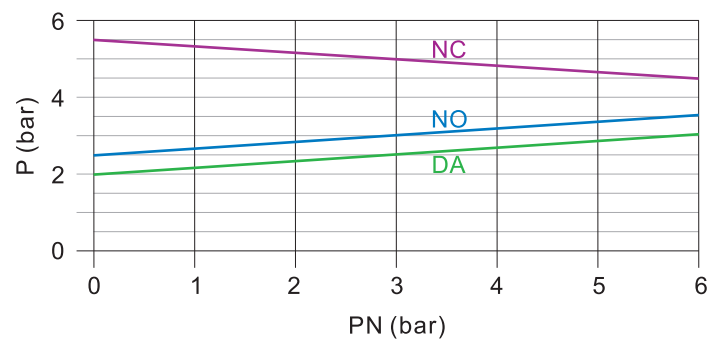
Pressure & temperature curve

All data based on water for considering 25 years safe life time

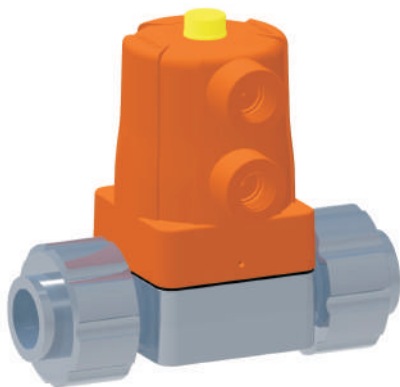


Control pressure

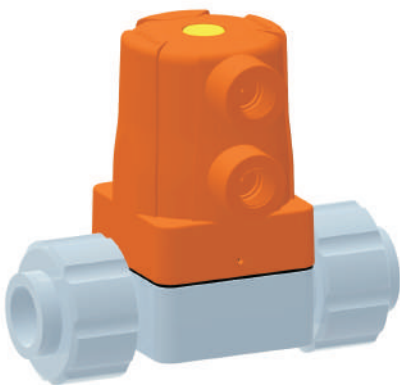
The maximum input value for pressurized air is 6 bar



MV300 , COMPACT , PNEUMATIC



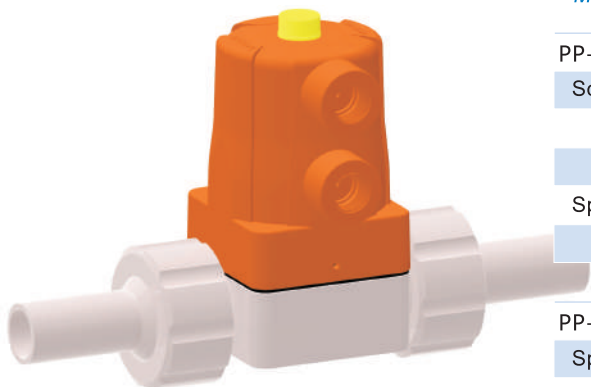
Material	Diaphragm	Sealing	Ident No.		
			NC	NO	DA
PVC-U Union DN15/d20					
Socket DIN	EPDM	EPDM	300.022.1020	300.024.1020	300.026.1020
	FPM	FPM	300.042.1020	300.044.1020	300.046.1020
	PTFE	FPM	300.062.1020	300.064.1020	300.066.1020
Socket JIS	EPDM	EPDM	300.022.1220	300.024.1220	300.026.1220
	FPM	FPM	300.042.1220	300.044.1220	300.046.1220
	PTFE	FPM	300.062.1220	300.064.1220	300.066.1220
Socket ANSI	EPDM	EPDM	300.022.1420	300.024.1420	300.026.1420
	FPM	FPM	300.042.1420	300.044.1420	300.046.1420
	PTFE	FPM	300.062.1420	300.064.1420	300.066.1420
PVC-U Thread G3/8					
Thread	EPDM		300.022.9610	300.024.9610	300.026.9610
	FPM		300.042.9610	300.044.9610	300.046.9610
	PTFE		300.072.9610	300.074.9610	300.076.9610



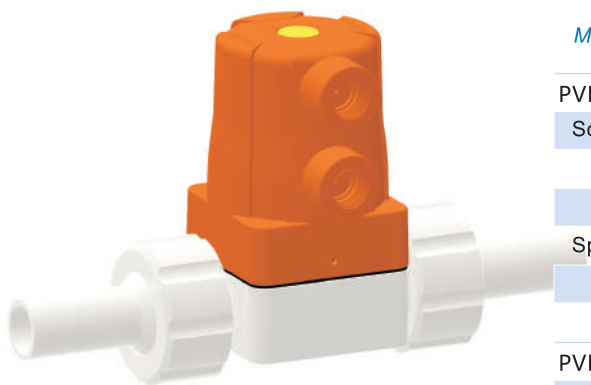
Material	Diaphragm	Sealing	Ident No.		
			NC	NO	DA
PVC-C Union DN15/d20					
Socket DIN	EPDM	EPDM	300.222.1020	300.224.1020	300.226.1020
	FPM	FPM	300.242.1020	300.244.1020	300.246.1020
	PTFE	FPM	300.262.1020	300.264.1020	300.266.1020
Socket JIS	EPDM	EPDM	300.222.1220	300.224.1220	300.226.1220
	FPM	FPM	300.242.1220	300.244.1220	300.246.1220
	PTFE	FPM	300.262.1220	300.264.1220	300.266.1220
Socket ANSI	EPDM	EPDM	300.222.1420	300.224.1420	300.226.1420
	FPM	FPM	300.242.1420	300.244.1420	300.246.1420
	PTFE	FPM	300.262.1420	300.264.1420	300.266.1420
PVC-C Thread G3/8					
Thread	EPDM		300.222.9610	300.224.9610	300.226.9610
	FPM		300.242.9610	300.244.9610	300.246.9610
	PTFE		300.272.9610	300.274.9610	300.276.9610

+ Order code

MV300 , COMPACT , PNEUMATIC



Material	Diaphragm	Sealing	Ident No.		
			NC	NO	DA
PP-H Union DN15/d20					
Socket DIN	EPDM	EPDM	300.422.1020	300.424.1020	300.426.1020
	FPM	FPM	300.442.1020	300.444.1020	300.446.1020
	PTFE	FPM	300.462.1020	300.464.1020	300.466.1020
Spigot Butt-IR	EPDM	EPDM	300.422.3020	300.424.3020	300.426.3020
	FPM	FPM	300.442.3020	300.444.3020	300.446.3020
	PTFE	FPM	300.462.3020	300.464.3020	300.466.3020
PP-Natural Union DN15/d20					
Spigot Butt-IR	EPDM	EPDM	300.522.3020	300.524.3020	300.526.3020
	FPM	FPM	300.542.3020	300.544.3020	300.546.3020
	PTFE	FPM	300.562.3020	300.564.3020	300.566.3020
PP-H Thread G3/8					
Thread	EPDM		300.422.9610	300.424.9610	300.426.9610
	FPM		300.442.9610	300.444.9610	300.446.9610
	PTFE		300.472.9610	300.474.9610	300.476.9610
PP-H Flare LINK 3/4 "					
Flare LINK	EPDM		300.422.0419	300.424.0419	300.426.9619
	FPM		300.442.0419	300.444.0419	300.446.0419
	PTFE		300.472.0419	300.474.0419	300.476.0419
PP-Natural Flare LINK 3/4 "					
Flare LINK	EPDM		300.522.0419	300.524.0419	300.526.9619
	FPM		300.542.0419	300.544.0419	300.546.0419
	PTFE		300.572.0419	300.574.0419	300.576.0419



Material	Diaphragm	Sealing	Ident No.		
			NC	NO	DA
PVDF Union DN15/d20					
Socket DIN	EPDM	EPDM	300.622.1020	300.624.1020	300.626.1020
	FPM	FPM	300.642.1020	300.644.1020	300.646.1020
	PTFE	FPM	300.662.1020	300.664.1020	300.666.1020
Spigot Butt-IR	EPDM	EPDM	300.622.3020	300.624.3020	300.626.3020
	FPM	FPM	300.642.3020	300.644.3020	300.646.3020
	PTFE	FPM	300.662.3020	300.664.3020	300.666.3020
PVDF Thread G3/8					
Thread	EPDM		300.622.9610	300.624.9610	300.626.9610
	FPM		300.642.9610	300.644.9610	300.646.9610
	PTFE		300.672.9610	300.674.9610	300.676.9610
PVDF Flare LINK 3/4 "					
Flare LINK	EPDM		300.622.0419	300.624.0419	300.626.9619
	FPM		300.642.0419	300.644.0419	300.646.0419
	PTFE		300.672.0419	300.674.0419	300.676.0419

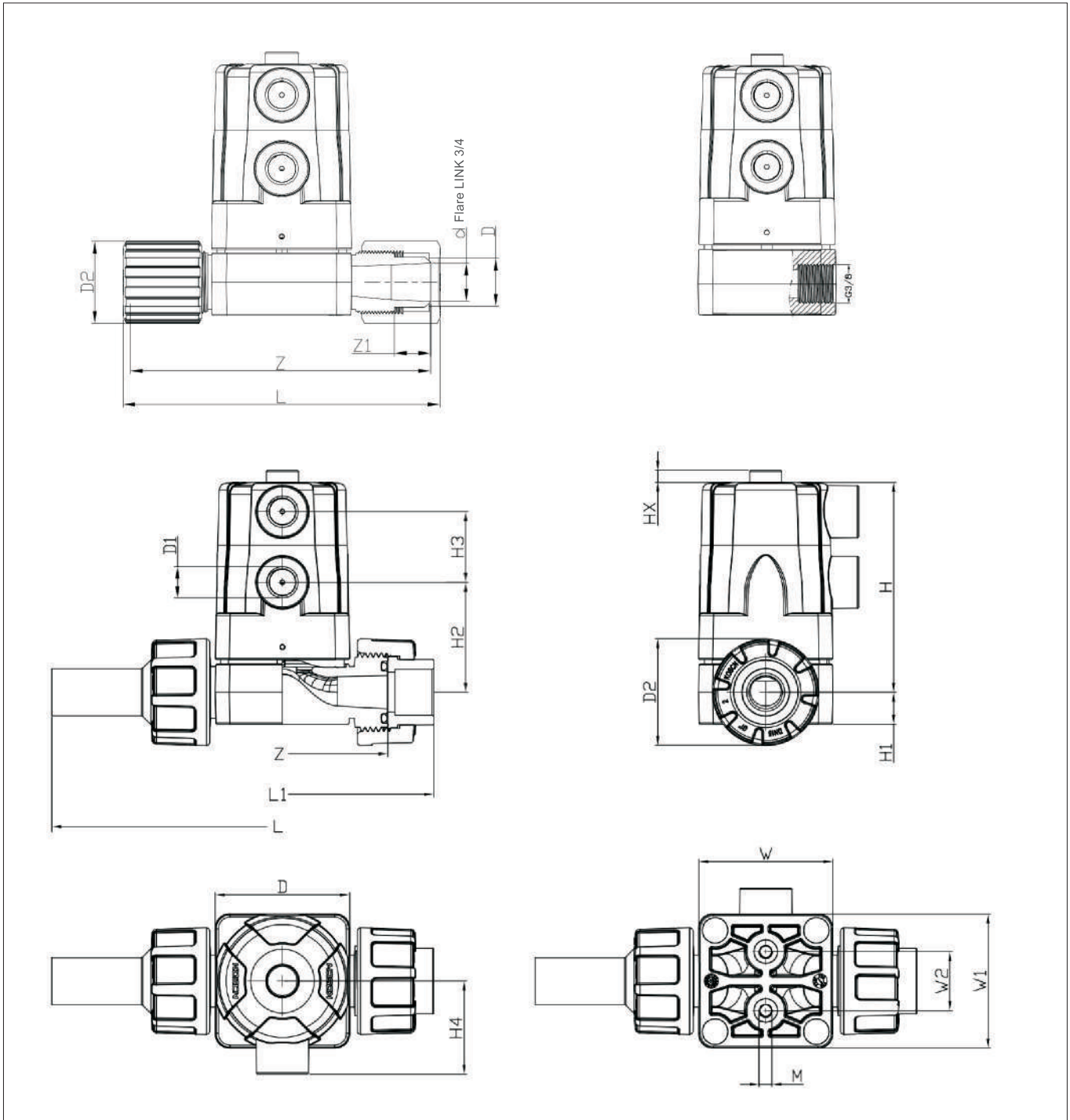
+ Order code

MV300 , COMPACT , PNEUMATIC



Material	Diaphragm	Sealing	Ident No.		
			NC	NO	DA
SUS Thread G3/8					
Thread	EPDM		300.922.9610	300.924.9610	300.926.9610
	FPM		300.942.9610	300.944.9610	300.946.9610
	PTFE		300.972.9610	300.974.9610	300.976.9610

+ Size



d	D (mm)	D1_G	D2 (mm)	H (mm)	H1 (mm)	H2 (mm)	H3 (mm)	H4 (mm)	L (mm)	L1 (mm)	M (mm)	Z (mm)	W (mm)	W1 (mm)	W2 (mm)	Lift = Hx (mm)
20	57	1/4	46	89	14	46	30	39	198	130	6	89	57	57	25	6
3/8	57	1/4	-	89	14	46	30	39	-	-	6	-	57	57	25	6
3/4	57	1/4	34	89	14	46	30	39	128	-	6	121	57	57	25	6

The above dimensions are not binding. They do not constitute a definite property guarantee, nor do they guarantee permanence. Will change as the product is improved or upgraded. This applies to the general terms of sale.

Selection Guide

MV300
Pneumatic Diaphragm Valve

	<input type="checkbox"/>	<input type="checkbox"/>	<input type="checkbox"/>	<input type="checkbox"/>	<input type="checkbox"/>	<input type="checkbox"/>	<input type="checkbox"/>	<input type="checkbox"/>	<input type="checkbox"/>	<input type="checkbox"/>
Product series	3	0	0							
Valve body material										
PVC-U				0						
PVC-C				2						
PPH				4						
PP-N				5						
PVDF				6						
SUS				9						
Diaphragm and O-ring										
EPDM(PER)-EPDM					2					
FPM(70)-FPM					4					
PTFE-EPDM					5					
PTFE-FPM					6					
PTFE					7					
Control mode										
NC						2				
NO						4				
DA						6				
Connection mode										
Flare LINK							0			
Union: Socket-end							1			
Union: Spigot Bitt+IR							3			
Thread							9			
Connection standard										
DIN								0		
JIS								2		
ANSI								4		
G								6		
Interface size										
3/8										10
3/4										19
d20, DN15										20

**contact**
customer center
www.koscn.cn



KOSCN