

MA630 of Electric Actuator



KOSCN-xxC Intelligent On/Off Actuator

- * Matched valves: 2-way, 3-way ball valve and butterfly valve
- * Rated voltage: AC/DC95V-265V, AC/DC24V
- * Control feedback mode: BD3J,B3J,B33J,B43J(feedback synchronous with arrival)
- * Alarm output: A(Relay contact feedback)
- * Achievable mode: 2 way /3 way
- * High performance brushless motor,overload or overheated protection of internal motor
- * It can be used up to 20,000 times
- * Two or more actuators can be used in parallel

KOSCN-xxN Normal On/Off Actuator

- * Matched valves: 2-way,3-way ball valve and butterfly valve
- * Rated voltage: DC12V,DC24V,AC24V/110V/230V
- * Control feedback mode: B3S,B3P,B3R,BD3S
- * High performance brushless motor,overheat/overload protection
- * It can be used up to 20,000 times
- * For AC series,it is forbidden to use two or more actuators in parallel

KOSCN-xxT Intelligent Modulating Actuator

- * Matched valves: 2-way,3-way ball valve and butterfly valve
- * Rated voltage: AC/DC95V-265V, AC/DC24V
- * Control signal: 4-20mA,0-20mA,0-10V,0-5V,1-5V,2-10V
- * Position feedback: 4-20mA
- * Position accuracy: 1%
- * Alarm output: A(Relay contact feedback)
- * High performance brushless motor,overload or overheated protection of internal motor
- * It can be used up to 20,000 times

KOSCN-xxR Intelligent Wireless Actuator

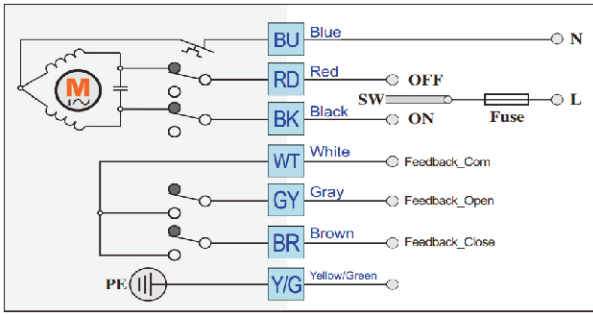
- * Matched valves: 2-way,3-way ball valve and butterfly valve
- * Rated voltage: AC/DC95V-265V, AC/DC24V
- * Communication Mode: RF433/868/915MHZ,FSK, LORA,RF Ocean (single control)
- * Communication protocol: Compatible Modbus
- * Wireless Module: SX1278/SX1276/A7108
- * Communication distance: The maximum is 3Km
- * Achievable mode: 2 way/3 way
- * High performance brushless motor,overload or overheated protection of internal motor
- * It can be used up to 20,000 times

KOSCN-xxB Intelligent Bus Actuator

- * Matched valves: 2-way,3-way ball valve and butterfly valve
- * Rated voltage:AC/DC95V-265V, AC/DC24V
- * Control feedback mode: RS485(Modbus), CANBus 2.0B/Mbus(customized)
- * Achievable mode: 2 way /3 way
- * High performance brushless motor,overload or overheated protection of internal motor
- * It can be used up to 20,000 times
- * Tow or more actuators can be used in parallel (RS485 could parallel maximum 32/64/256 actuators, while CANBus parallels 110 actuators)

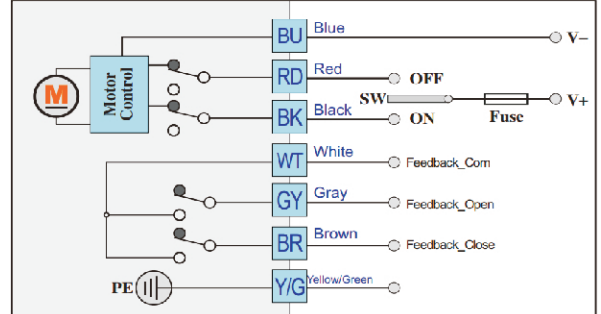
Normal on/off model-wiring diagrams

B3S



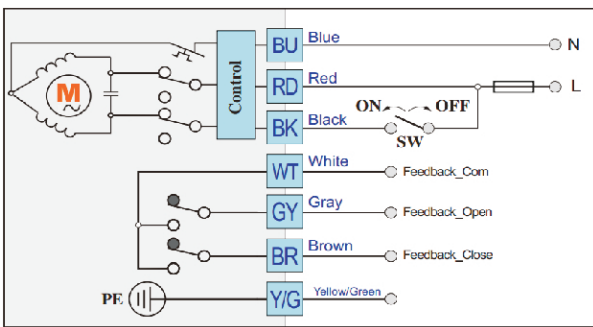
Normal on/off model-wiring diagrams

B3S- (DC series)



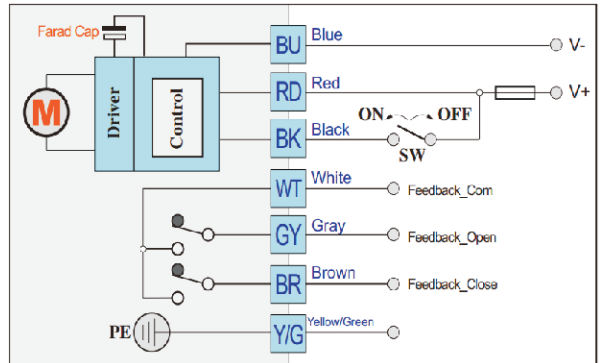
Normal on/off model-wiring diagrams

BD3S



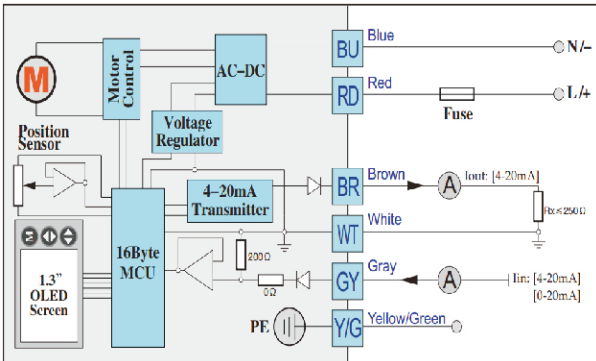
Normal on/off model-wiring diagrams

KT32S/BD3S (DC series)



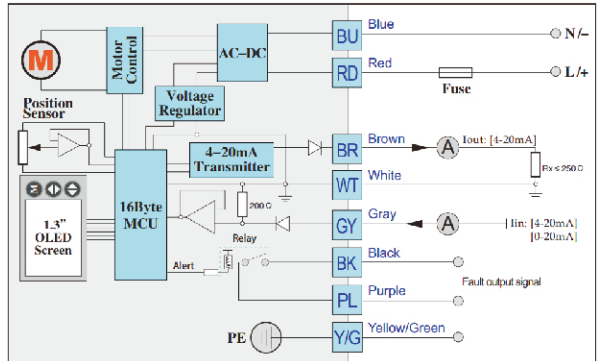
Intelligent modulating model-wiring diagrams

4-20mA / 0-20mA



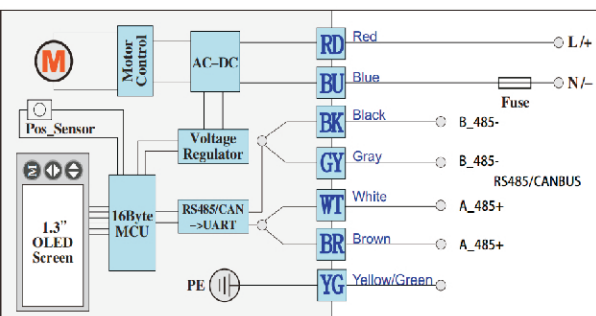
Intelligent modulating model-wiring diagrams

4-20mA-A / 0-20mA-A (Alarm)



Intelligent Bus model -Wiring Diagram

RS485 / CANBUS (02B-KT)



Interface

- Intelligent modulating model
- Intelligent Bus model interface

