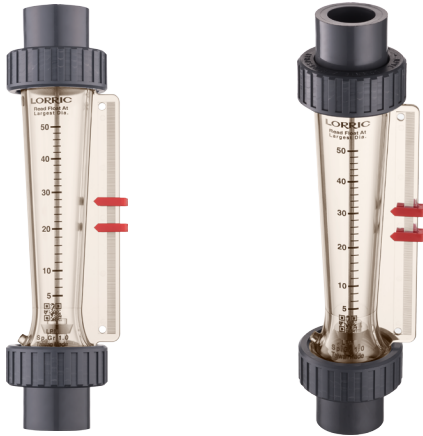


F301- New 270mm large size pipe size 3/4"-1" **F301 series**



Product Features · Use

- 4 design innovations to improve usability:
New body design: Decreases the vibration when working which stabilises flow distribution./ New indicator design: Easily adjustable and positionable./ Thickened threads for caps: Caps are easy to be locked even under bad concentricity./ Models with and without guide rods are able to share the same adaptors.
- Patented dual-indicator design for easy and clear flow range management.
- Laser engraved degree scales provide better readability and longer life.
- Available in customizable units, temperature, and molecular weight.

Standard Specs

- Model: F301PSU, F301H PSU
- Adaptor Size: 3/4", 1"
- Applicable Fluid: Liquid
- Flow direction: From the bottom up
- Engraved degree scales: Laser engraved degree scales
- Fluid Temperature: 50°C (Standard: UPVC adaptor)
60°C (PP adaptor)

- Working Pressure: 5.0 kg/cm²
- Full Scale Accuracy: ±5% F.S.
- Product Material

Body - PSU
 Float - Stainless 316, Hastelloy C
 Guide Rod - Stainless 316, Hastelloy C
 Guide Rod Bottom - PP
 Adaptor - Welding Type: UPVC
 Male, Female Thread: UPVC, PP
 Butt-fusion Adaptor: PP
 Union Nuts - UPVC
 O-ring - EPDM, VITON

- Adaptor Material
- Welding Type, Male Thread, Female Thread,
 Butt-fusion Adaptor

※ BSPT is standard thread type. NPT is available for custom order.

Scale Range

Product Code	Scale Range ※ 1 ※ 2 (L/min)
F301 - 20LPM	2.0-20 / S, H
F301 - 30LPM	3.0-30 / S, H
F301 - 50LPM	5.0-50 / S, H
F301 - 80LPM	8.0-80 / S, H
F301 - 100LPM	10-100 / S, H

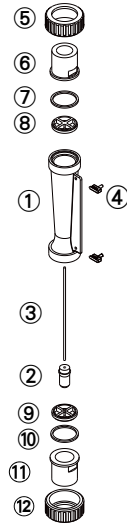
※ 1. Liquid flow meters are calibrated for 20°C water.
 ※ 2. " / " float material, S- Stainless 316, H- Hastelloy C.

Maximum working temperature for different adaptor materials

Adaptor Types	Maximum working temperature materials		
	~ 50°C	~ 60°C	~ 100°C
Welding Type	UPVC	-	-
Male / Female Thread	UPVC	PP	-
Butt-fusion Adaptor	-	PP	-

※ When maximum working temperature is over 50°C, the material for guide rod bottom and union nuts have to be PSU and aluminium.
 ※ If the maximum working temperature requirement of the adapter is over 60°C, please contact LORRIC directly.

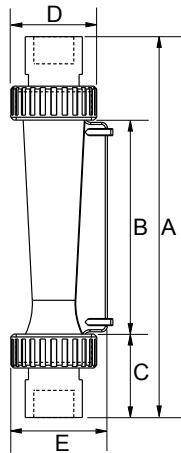
Parts Material



No.	Series	Material (Main material)*			
		1	2	3	4
1	Body	PSU	PSU	PSU	PSU
2	Float	S316	S316	Hastelloy C	PVC
3	Guide Rod	S316	S316	Ti	Hastelloy C
4	Pointer	PP	PP	PP	PP
5,12	Union Nuts	UPVC	UPVC	UPVC	UPVC
6,11	Adaptor	UPVC	UPVC	UPVC	UPVC
7,10	O-ring	EPDM	VITON	VITON	VITON
8,9	Guide Rod Bottom	PP	PP	PP	PP

* Material for different parts is optional for each flowmeter.

Parts Size



Adaptor Material	A	B	C	D	E
1" Male Thread	270	153	58.5	61	69
1" Female Thread	270	153	58.5	61	69
1" JIS	255	153	51	61	69
PP OD33 ID25.2	254	153	50.5	61	69
3/4" Male Thread	256	153	51.5	61	69
3/4" JIS	260	153	53.5	61	69

Unit: mm

Specification inquiry (F301)

* Contact us with below information.

- Fluid - Water Other _____
- Specific gravity - Standard-1.0 Other _____
- Pressure - Standard-5.0kg/cm² Other ___kg/cm²
- Temperature - Normal temperature Other ___°C
- Scale Range - _____ L/min ~ _____ L/min
- Adaptor Size - 1" JIS Other _____
- Adaptor Material - Welding Type Male Thread
 Female Thread Butt-fusion Adaptor
 Other _____
- Material
 - 1 Body PC 2 Body PSU
 - 3 Body PSU Hastelloy C Float, Ti Guide Rod
 - 4 Body PSU Hastelloy C Float & Guide Rod
Adaptor PSU (for high working temperature)
 - 5 Other
Specs besides above listed information _____