

# QZH Easy Connect Flat Fan Nozzle

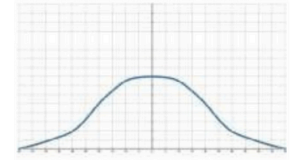
Flat Fan



【 Top view of nozzle spray pattern 】



【 Flow distribution 】



- **Recommended working pressure:** 3.0 kgf/cm<sup>2</sup>
- **Flowrate tolerance:** ± 5% @ 3.0 ± 0.1 kgf/cm<sup>2</sup>
- **Angle tolerance:** ± 5° @ 3.0 ± 0.1 kgf/cm<sup>2</sup>
- **Jet angle tolerance:** ± 3°

## Features

### ● High-Impact Flat Fan Nozzle

Delivers exceptional performance for high-quality applications.

### ● Tool-Free Quick-Release Design

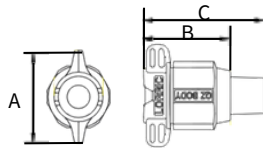
Two-piece structure with secure locking points ensures easy assembly, precise alignment, and stable operation.

### ● EPDM and Viton O-ring Options

Compatible with various chemical processes. The specialized structure ensures a tight seal between the nozzle and base, preventing leaks.

## Applications

- **Cleaning:** Vehicles, Containers, Filters, Dust, Gravel, Metals, Metal Parts, Machinery, Steel Plates, Various Containers, High Pressure Cleaning, Wet Processing, Display Pane, machine tool cleaning, etc.
- **Cooling:** Gas, tank, machinery, metal, roof, etc.
- **Dispersion:** Humidifying, chemicals (etching solution, Lubrication fluid, insect repellent fluid, etc.), Water Curtain (fire protection, dust prevention, deodorization, etc.).



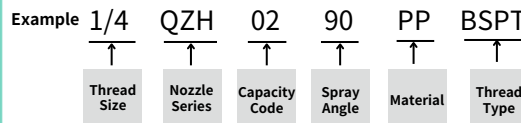
Appearance dimensions may vary depending on model, material. Please ask for details.

Material	Serie	Unit (mm)			Thread Type
		A	B	C	
Plastic	1/4 QZH	36	30.7	42.7	Male
	3/8 QZH	36	30.7	42.7	Male

## Material

- TIP: PP
- Oring: EPDM, VITON, FEPM
- Base: PVDF, PP, UPVC

### How to place an order for LORRIC nozzles?



※ Standard Pressure: Column in red.  
 ※ This product for spray angle 0°, 15°, 25°, 40°, 50°, 100° and 110° is able to be made to order.

Spray Angle	Capacity Code	Capacity at Pressure Average									Average particle size (um)	Min. Free Passage (mm)
		0.5 kgf/cm <sup>2</sup>	1 kgf/cm <sup>2</sup>	1.5 kgf/cm <sup>2</sup>	2 kgf/cm <sup>2</sup>	3 kgf/cm <sup>2</sup>	4 kgf/cm <sup>2</sup>	5 kgf/cm <sup>2</sup>	6 kgf/cm <sup>2</sup>	8 kgf/cm <sup>2</sup>		
65°	2	0.32	0.45	0.55	0.64	0.78	0.90	1.01	1.11	1.28	-	0.4
	2.5	0.40	0.56	0.69	0.80	0.98	1.13	1.26	1.38	1.60	-	0.6
	3	0.48	0.68	0.83	0.96	1.17	1.35	1.51	1.66	1.92	-	0.7
	4	0.64	0.90	1.11	1.28	1.56	1.81	2.02	2.21	2.55	-	0.8
	5	0.80	1.13	1.38	1.60	1.96	2.26	2.52	2.76	3.19	-	0.9
	6	0.96	1.35	1.66	1.92	2.35	2.71	3.03	3.32	3.83	230	0.9
	7	1.12	1.58	1.94	2.23	2.74	3.16	3.53	3.87	4.47	-	1.0
	7.5	1.20	1.69	2.07	2.39	2.93	3.39	3.79	4.15	4.79	-	1.0
	8	1.28	1.81	2.21	2.55	3.13	3.61	4.04	4.42	5.11	-	1.1
	9	1.44	2.03	2.49	2.87	3.52	4.06	4.54	4.98	5.75	-	1.1
	10	1.60	2.26	2.76	3.19	3.91	4.51	5.05	5.53	6.39	-	1.2
	12.5	2.00	2.82	3.46	3.99	4.89	5.64	6.31	6.91	7.98	370	1.3
	15	2.39	3.39	4.15	4.79	5.87	6.77	7.57	8.29	9.58	-	1.4
	20	3.19	4.51	5.53	6.39	7.82	9.03	10.10	11.06	12.77	-	1.6
	25	3.99	5.64	6.91	7.98	9.78	11.29	12.62	13.82	15.96	-	2.0
30	4.79	6.77	8.29	9.58	11.73	13.54	15.14	16.59	19.16	-	2.3	

※ For MPa / bar / psi units, please refer to <https://www.lorric.com/>.

Spray Angle	Capacity Code	Capacity at Pressure Average									Average particle size (um)	Min. Free Passage (mm)
		0.5 kgf/cm <sup>2</sup>	1 kgf/cm <sup>2</sup>	1.5 kgf/cm <sup>2</sup>	2 kgf/cm <sup>2</sup>	3 kgf/cm <sup>2</sup>	4 kgf/cm <sup>2</sup>	5 kgf/cm <sup>2</sup>	6 kgf/cm <sup>2</sup>	8 kgf/cm <sup>2</sup>		
80°	2	0.32	0.45	0.55	0.64	0.78	0.90	1.01	1.11	1.28	-	0.3
	2.5	0.40	0.56	0.69	0.80	0.98	1.13	1.26	1.38	1.60	-	0.4
	3	0.48	0.68	0.83	0.96	1.17	1.35	1.51	1.66	1.92	-	0.4
	4	0.64	0.90	1.11	1.28	1.56	1.81	2.02	2.21	2.55	-220	0.6
	5	0.80	1.13	1.38	1.60	1.96	2.26	2.52	2.76	3.19	-	0.7
	6	0.96	1.35	1.66	1.92	2.35	2.71	3.03	3.32	3.83	-	0.7
	7	1.12	1.58	1.94	2.23	2.74	3.16	3.53	3.87	4.47	-	0.9
	7.5	1.20	1.69	2.07	2.39	2.93	3.39	3.79	4.15	4.79	-	0.9
	8	1.28	1.81	2.21	2.55	3.13	3.61	4.04	4.42	5.11	-	1.0
	9	1.44	2.03	2.49	2.87	3.52	4.06	4.54	4.98	5.75	-	1.0
	10	1.60	2.26	2.76	3.19	3.91	4.51	5.05	5.53	6.39	-	1.1
	12.5	2.00	2.82	3.46	3.99	4.89	5.64	6.31	6.91	7.98	-	1.3
	15	2.39	3.39	4.15	4.79	5.87	6.77	7.57	8.29	9.58	340	1.4
	20	3.19	4.51	5.53	6.39	7.82	9.03	10.10	11.06	12.77	-	1.6
	25	3.99	5.64	6.91	7.98	9.78	11.29	12.62	13.82	15.96	-	1.9
30	4.79	6.77	8.29	9.58	11.73	13.54	15.14	16.59	19.16	-	2.1	
90°	2	0.32	0.45	0.55	0.64	0.78	0.90	1.01	1.11	1.28	-	0.3
	2.5	0.40	0.56	0.69	0.80	0.98	1.13	1.26	1.38	1.60	-	0.4
	3	0.48	0.68	0.83	0.96	1.17	1.35	1.51	1.66	1.92	-	0.4
	4	0.64	0.90	1.11	1.28	1.56	1.81	2.02	2.21	2.55	-	0.5
	5	0.80	1.13	1.38	1.60	1.96	2.26	2.52	2.76	3.19	210	0.5
	6	0.96	1.35	1.66	1.92	2.35	2.71	3.03	3.32	3.83	-	0.5
	7	1.12	1.58	1.94	2.23	2.74	3.16	3.53	3.87	4.47	-	0.6
	7.5	1.20	1.69	2.07	2.39	2.93	3.39	3.79	4.15	4.79	330	0.8
	8	1.28	1.81	2.21	2.55	3.13	3.61	4.04	4.42	5.11	-	0.8
	9	1.44	2.03	2.49	2.87	3.52	4.06	4.54	4.98	5.75	-	0.8
	10	1.60	2.26	2.76	3.19	3.91	4.51	5.05	5.53	6.39	-	1.0
	12.5	2.00	2.82	3.46	3.99	4.89	5.64	6.31	6.91	7.98	-	1.1
	15	2.39	3.39	4.15	4.79	5.87	6.77	7.57	8.29	9.58	-	1.2
	20	3.19	4.51	5.53	6.39	7.82	9.03	10.10	11.06	12.77	-	1.4
	25	3.99	5.64	6.91	7.98	9.78	11.29	12.62	13.82	15.96	-	1.6
30.2	4.79	6.77	8.29	9.58	11.73	13.54	15.14	16.59	19.16	-	1.8	
100°	2.5	0.32	0.45	0.55	0.64	0.78	0.90	1.01	1.11	1.28	-	-
	3	0.40	0.56	0.69	0.80	0.98	1.13	1.26	1.38	1.60	-	-
	4	0.48	0.68	0.83	0.96	1.17	1.35	1.51	1.66	1.92	-	-
	5	0.64	0.90	1.11	1.28	1.56	1.81	2.02	2.21	2.55	-	-
	6	0.80	1.13	1.38	1.60	1.96	2.26	2.52	2.76	3.19	-	-
	7	0.96	1.35	1.66	1.92	2.35	2.71	3.03	3.32	3.83	-	-
	7.5	1.12	1.58	1.94	2.23	2.74	3.16	3.53	3.87	4.47	-	-
	8	1.20	1.69	2.07	2.39	2.93	3.39	3.79	4.15	4.79	-	-
	9	1.28	1.81	2.21	2.55	3.13	3.61	4.04	4.42	5.11	-	-
	10	1.44	2.03	2.49	2.87	3.52	4.06	4.54	4.98	5.75	-	-
	12.5	1.60	2.26	2.76	3.19	3.91	4.51	5.05	5.53	6.39	-	-
	15	2.00	2.82	3.46	3.99	4.89	5.64	6.31	6.91	7.98	-	-
	20	2.39	3.39	4.15	4.79	5.87	6.77	7.57	8.29	9.58	-	-
	25	3.19	4.51	5.53	6.39	7.82	9.03	10.10	11.06	12.77	-	-
	30	3.99	5.64	6.91	7.98	9.78	11.29	12.62	13.82	15.96	-	-
	4.79	6.77	8.29	9.58	11.73	13.54	15.14	16.59	19.16	-	-	

※ For MPa / bar / psi units, please refer to <https://www.lorric.com/>.