

## F311- New 195mm middle size pipe size 1/2"-1" F311 series



### Product Features · Use

- 4 design innovations to improve usability:  
New body design: Decreases the vibration when working which stabilises flow distribution./ New indicator design: Easily adjustable and positionable./ Thickened threads for caps: Caps are easy to be locked even under bad concentricity./ Models with and without guide rods are able to share the same adaptors.
- Patented dual-indicator design for easy and clear flow range management.
- Laser engraved degree scales provide better readability and longer life.
- Available in customizable units, temperature, and molecular weight.

### Standard Specs

- Model: F311 PSU
  - Adaptor Size: 1/2", 3/4", 1"
  - Applicable Fluid: Liquid
  - Flow direction: From the bottom up
  - Engraved degree scales: Laser engraved degree scales
  - Fluid Temperature: 50°C (Standard: UPVC adaptor)  
60°C (PP adaptor)
  - Working Pressure: 5.0 kg/cm<sup>2</sup>
  - Full Scale Accuracy: ±5% F.S.
  - Product Material
    - Body - PSU
    - Float - Stainless 316, Hastelloy C
    - Guide Rod - Stainless 316
    - Guide Rod Bottom - PP
    - Adaptor - Welding Type: UPVC  
Male, Female Thread: UPVC, PP  
Butt-fusion Adaptor: PP
    - Union Nuts - UPVC
    - O-ring - EPDM, VITON
  - Adaptor Material
    - Welding Type, Male Thread, Female Thread,  
Butt-fusion Adaptor
- ※ BSPT is standard thread type. NPT is available for custom order.

### Scale Range

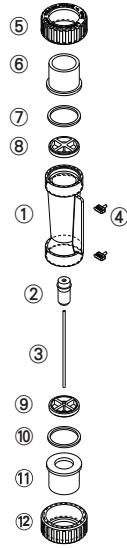
Product Code	Scale Range* 1 ※ 2 (L/min)
F311 - 80LPM	23-80 / S
F311 - 100LPM	20-100 / S

※ 1.Liquid flow meters are calibrated for 20°C water.  
 ※ 2." / "float material, S- Stainless 316.

### Maximum working temperature for different adaptor materials

Adaptor Types	Maximum working temperature materials	
	~ 50°C	~ 60°C
Welding Type	UPVC	-
Male / Female Thread	UPVC	PP
Butt-fusion Adaptor	PP	PP

## Parts Material

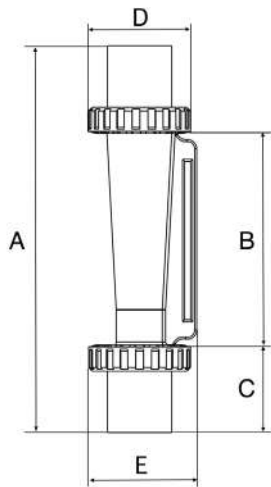


No.	Series	Material (Main material)* 1			
		1	2	3	4
1	Body	PSU	PSU	PSU	PSU
2	Float	S316	S316	S316	S316
3	Guide Rod	S316	S316	S316	S316
4	Pointer	PP	PP	PP	PP
5,12	Union Nuts	UPVC	UPVC	UPVC	UPVC
6,11	Adaptor	UPVC	UPVC	PP**2	PP**2
7,10	O-ring	EPDM	VITON	VITON	VITON
8,9	Guide Rod Bottom	PP	PP	PP	PP

※ 1. Material for different parts is optional for each flowmeter.

※ 2. For thread and welding adaptor only.

## Parts Size



Adaptor Spec	A	B	C	D	E
1" Male Thread	211	93	59	61	67
1" Female Thread	210	93	58.5	61	67
1" CNS	197	93	52	61	67
1" ASTM	197	93	52	61	67
1" JIS	196	93	51.5	61	67
3/4" Male Thread	197	93	52	61	67
3/4" Female Thread	212	93	59.5	61	67
3/4" CNS	200	93	53.5	61	67
3/4" ASTM	192	93	41	61	67
3/4" JIS	200	93	53.5	61	67
3/4" DIN	200	93	53.5	61	67
3/4" DIN Thick pipe wall	196	93	42	61	67
3/4" JIS MIN	193	93	50	61	67
1/2" ASTM	192	93	49.5	61	67
1/2" JIS	190	93	48.5	61	67
1/2" DIN	190	93	48.5	61	67
PP OD33 ID25.2	194	93	50.5	61	67

Unit: mm

## Specification inquiry (F311)

※ Contact us with below information.

- Fluid -  Water  Other \_\_\_\_\_
- Specific gravity -  Standard-1.0  Other \_\_\_\_\_
- Pressure -  Standard-5.0kg/cm<sup>2</sup>  Other \_\_\_ kg/cm<sup>2</sup>
- Temperature -  Normal temperature  Other \_\_\_ °C
- Scale Range - \_\_\_\_\_ L/min ~ \_\_\_\_\_ L/min
- Adaptor Size -  1" JIS  
 Other \_\_\_\_\_
- Adaptor Material  
 Welding Type  Male Thread  
 Female Thread  Butt-fusion Adaptor  
 Other \_\_\_\_\_
- Inductor -  Yes  No
- Other - \_\_\_\_\_