

F101- New 168mm middle size pipe size 1/2" F101 series



**Product Features · Use**

- 4 design innovations to improve usability:  
 New body design: Decreases the vibration when working which stabilises flow distribution./ New indicator design: Easily adjustable and positionable./ Thickened threads for caps: Caps are easy to be locked even under bad concentricity./ Models with and without guide rods are able to share the same adaptors.
- Patented dual-indicator design for easy and clear flow range management.
- Laser engraved degree scales provide better readability and longer life.
- Available in customizable units, temperature, and molecular weight.

**Standard Specs**

- Model: F101PC, F101PSU, F101H PSU
  - Adaptor Size: 1/2"
  - Applicable Fluid: Liquid
  - Flow direction: From the bottom up
  - Fluid Temperature: 50°C (Standard: UPVC adaptor)  
 60°C (PP adaptor)  
 70°C (PVDF adaptor)
  - Working Pressure: 5.0 kg/cm<sup>2</sup> MAX
  - Full Scale Accuracy: ±5% F.S.
  - Product Material
    - Body - PC, PSU
    - Float - Stainless 316, Hastelloy C
    - Guide Rod - Stainless 316, Ti, Hastelloy C
    - Guide Rod Bottom - PP, Strengthened Fiberglass (FRPP)
    - Adaptor - Welding Type: UPVC  
 Male, Female Thread: UPVC, PVDF  
 Butt-fusion Adaptor: PP
    - Union Nuts - UPVC, Aluminum
    - O-ring - EPDM, VITON
  - Adaptor Material
    - Welding Type, Male Thread, Female Thread, Butt-fusion Adaptor
- ※ BSPT is standard thread type. NPT is available for custom order.

**Scale Range**

Product Code	Scale Range* 1 ※ 2 (L/min)
F101-2LPM	0.2-2.0 / S, H Teflon※3
F101-4LPM	0.4-4.0 / S, H
F101-5LPM	0.5-5.0 / S, H
F101-10LPM	1.0-10 / S, H
F101-15LPM	1.5-15 / S, H
F101-20LPM	2.0-20 / S, H

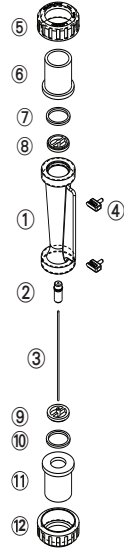
※ 1. Liquid flow meters are calibrated for 20°C water.  
 ※ 2. " / "float material, S- Stainless 316, H- Hastello C.  
 ※ Please contact our sales before ordering F101-2LPM (unstandardized items.)

**Maximum working temperature for different adaptor materials**

Adaptor Types	Maximum working temperature materials		
	~ 50°C	~ 60°C	~ 70°C
Welding Type	UPVC	-	-
Male / Female Thread	UPVC	-	PVDF
Butt-fusion Adaptor	-	PP	-

※ When maximum working temperature is over 50°C, the material for guide rod bottom and union nuts have to be PSU and aluminium.

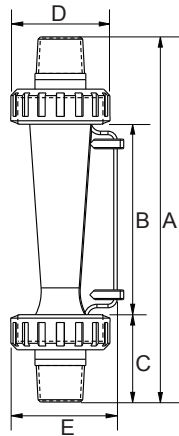
## Parts Material



No.	Series	Material (Main material)*			
		1	2	3	4
1	Body	PC	PC	PSU	PSU
2	Float	S316	S316	Hastelloy C	Hastelloy C
3	Guide Rod	S316	S316	Ti	Hastelloy C
4	Pointer	PP	PP	PP	PP
5,12	Union Nuts	UPVC	UPVC	UPVC	Aluminum
6,11	Adaptor	UPVC	UPVC	UPVC	UPVC
7,10	O-ring	EPDM	VITON	VITON	VITON

※ Material for different parts is optional for each flowmeter.

## Parts Size



Adaptor Spec	A	B	C	D	E
1/2" Male Thread	164	85	39.5	43	49.5
1/2" Female Thread	166	85	40.5	43	49.5
1/2"CNS	166	85	40.5	43	49.5
1/2"ASTM	166	85	40.5	43	49.5
1/2"JIS	166	85	40.5	43	49.5
1/2" PVDF Female Thread	166	85	40.5	43	49.5

Unit: mm

## Specification inquiry (F101)

※ Contact us with below information.

- Fluid -  Water  Other \_\_\_\_\_
- Specific gravity -  Standard-1.0  Other \_\_\_\_\_
- Pressure -  Standard-5.0kg/cm<sup>2</sup>  Other \_\_\_ kg/cm<sup>2</sup>
- Temperature -  Normal temperature  Other \_\_\_ °C
- Scale Range - \_\_\_\_\_ L/min ~ \_\_\_\_\_ L/min
- Adaptor Size -  3/4" JIS  Other \_\_\_\_\_
- Adaptor Material -  Welding Type  Male Thread  
 Female Thread  Butt-fusion Adaptor  
 Other \_\_\_\_\_

- Material
  - 1 Body PC  2 Body PSU
  - 3 Body PSU Hastelloy C FloaT, Ti Guide Rod
  - 4 Body PSU Hastelloy C Float & Guide Rod  
Adaptor PSU (for high working temperature)
  - 5 Other \_\_\_\_\_  
Specs besides above listed information \_\_\_\_\_