

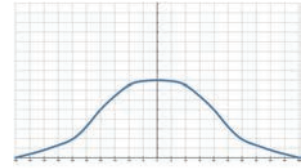
HB Angle adjustable and easy install flat fan nozzle with pipe clamp



【 Top view of nozzle spray pattern 】



【 Flow distribution 】



- Recommended working pressure: 1.0 kgf/cm²
- Flowrate tolerance: ± 10% @ 1.0 ± 0.1 kgf/cm²
- Angle tolerance: ± 10° @ 1.0 ± 0.1 kgf/cm²

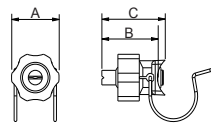
Features

- The spraying type is fan type, and the spray shape is single line and two sides are tapered (tapered edge), which presents a bell curve shape flow field distribution with weaker ends compared to the middle.
- Unique pipe clamp design allows to be installed by drilling in the pipeline without any tools.
- Three-piece structure design, divided into nozzle part (HB), base part (EB) and nuts, which facilitates maintenance cleaning and replacement, and can save the cost of replacing the nozzle head.
- Double gasket seal design, between the nozzle and the base, and between the base and the pipeline, are sealed by NBR gasket to ensure no water leakage.

- The nozzle part is designed as a sphere, and the nozzle axis is anisotropically adjusted by 50°.
- Spec of drilling installation hole:
 - Ø 15 (14.3~15mm) - Ø 17 (16.4~17mm)
 - Ø 20 (19.0~20mm) 8.35 ~ 9m/m
- Size of Pipe clamp:
 - 1" (OD34 +/-0.3mm) - 1-1/4" (OD42 +/-0.3mm)
 - 1-1/2" (OD48 +/-0.4mm)
- If there is any other spray type or material request, please choose TB adapter (with choices of 1/4" and 3/8" internal threads) and general fan or cone nozzles with optional materials.

Applications

- Cleaning: Pretreatment for painting in automotive and home appliance manufacturing industries.



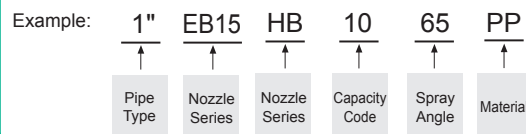
Appearance dimensions may vary depending on model, material. Please ask for details.

Material	Serie	Unit (mm)			Thread Type	Weight (g)
		A	B	C		
Plastic	HB	52	62	70	-	62.5

Material

- Nozzle: PP
- Clamp, nut: fiberglass, Strengthening PP
- Pipe clamp: Stainless 316
- Sealing ring: NBR

How to place an order for LORRIC nozzles?



※ Standard Pressure: Column in red.

Spray Angle	Capacity Code	HB Color	Capacity at Pressure								
			0.5 kgf/cm ²	0.7 kgf/cm ²	1 kgf/cm ²	1.5 kgf/cm ²	2 kgf/cm ²	2.5 kgf/cm ²	3 kgf/cm ²	3.5 kgf/cm ²	4 kgf/cm ²
65°	10	Sky Blue	1.60	1.89	2.26	2.77	3.20	3.57	3.91	4.23	4.52
	20	Red	3.20	3.78	4.52	5.54	6.39	7.15	7.83	8.46	9.04
	30	Orange	4.79	5.66	6.77	8.29	9.57	10.70	11.73	12.67	13.54
	35	Black	5.59	6.61	7.90	9.68	11.17	12.49	13.68	14.78	15.80
	40	Yellow	6.39	7.56	9.03	11.06	12.77	14.28	15.64	16.89	18.06
	50	Blue	7.98	9.45	11.29	13.83	15.97	17.85	19.55	21.12	22.58
	60	Green	9.58	11.34	13.55	16.60	19.16	21.42	23.47	25.35	27.10
80°	10	Sky Blue	1.60	1.89	2.26	2.77	3.20	3.57	3.91	4.23	4.52
	20	Red	3.20	3.78	4.52	5.54	6.39	7.15	7.83	8.46	9.04
	30	Orange	4.79	5.66	6.77	8.29	9.57	10.70	11.73	12.67	13.54
	35	Black	5.59	6.61	7.90	9.68	11.17	12.49	13.68	14.78	15.80
	40	Yellow	6.39	7.56	9.03	11.06	12.77	14.28	15.64	16.89	18.06
	50	Blue	7.98	9.45	11.29	13.83	15.97	17.85	19.55	21.12	22.58
	60	Green	9.58	11.34	13.55	16.60	19.16	21.42	23.47	25.35	27.10

※ For MPa / bar / psi units, please refer to LORRIC.com.