

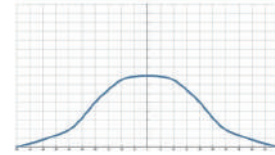
## QT Plastic full cone nozzle with pipe clamp



【 Top view of nozzle spray pattern 】



【 Flow distribution 】



- Recommended working pressure: 2.0 kgf/cm<sup>2</sup>
- Flowrate tolerance: ± 10% @ 2.0 ± 0.1 kgf/cm<sup>2</sup>
- Angle tolerance: ± 10° @ 2.0 ± 0.1 kgf/cm<sup>2</sup>
- Size:
  - Drilling hole size: Ø 20 (19.0~20m/m)
  - Fits pipe size: 1-1/4, 1-1/2O

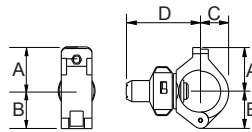
### Features

- Full cone spray.
- The two-piece combination design is divided into a nozzle and a base. The nozzle part can be fixed to the base without fixing the nut. The base has a special pipe clamp design. It is only necessary to drill a hole in the water outlet pipe, and then lock it with iron screw. The nozzle is fixed on the pipe. This nozzle is commonly used in the pre-painting and continuous casting machine cooling process.

- Size:
  - Drilling hole size for pipe clamp: Ø 20 (19.0~20m/m)
  - Fits pipe size: 1-1/4"(OD42 +/-0.3mm), 1-1/2"(OD48 +/-0.4mm)

### Applications

- Cleaning: Dust, cleaning device, etc.
- Dispersion: Humidifying, fire fighting, and dust suppression.



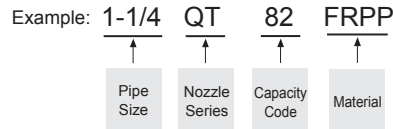
Material	Serie	Unit (mm)				Thread Type	Weight (g) PP
		A	B	C	D		
Plastic	1-1/4QT	42	50	31	85	1-1/4M	105.4
	1-1/2QT	42	50	31	85	1-1/2M	100.5

Appearance dimensions may vary depending on model, material. Please ask for details.

### Material

- TIP,Clamp: Strengthened Fiberglass PP(FRPP)
- Oring: NBR

#### How to place an order for LORRIC nozzles?



※ Standard Pressure: Column in red.  
 ※ This product for spray angle 90° and 120° is able to be made to order.

Spray Angle	Capacity Code	Clamp Size		Capacity at Pressure									Average particle size (um)	Min. Free Passage (mm)	Filter mesh
		1-1/4	1-1/2	0.5 kgf/cm <sup>2</sup>	1 kgf/cm <sup>2</sup>	1.5 kgf/cm <sup>2</sup>	2 kgf/cm <sup>2</sup>	2.5 kgf/cm <sup>2</sup>	3 kgf/cm <sup>2</sup>	3.5 kgf/cm <sup>2</sup>	4 kgf/cm <sup>2</sup>	5 kgf/cm <sup>2</sup>			
60°	82	v	v	15.0	21.2	26.0	30.0	33.5	36.7	39.7	42.4	47.4	700	3.2	-

※ For MPa / bar / psi units, please refer to <https://www.lorric.com/>.