

QSWP Plastic hollow cone nozzle with pipe clamp

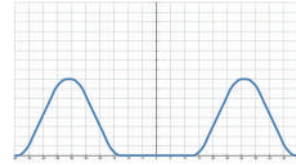


- Recommended working pressure: 2.0 kgf/cm²
- Flowrate tolerance: ± 10% @ 2.0 ± 0.1 kgf/cm²
- Angle tolerance: ± 10° @ 2.0 ± 0.1 kgf/cm²

【 Top view of nozzle spray pattern 】



【 Flow distribution 】



Hollow Cone Nozzles

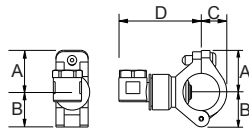
- Spray patterns: Hollow Cone. The shape of the spray is circular.
- The nozzle flow path has no complicated structure which effectively avoids clogging.
- Multi-piece design, the nozzle part adopts a two-piece structure. The nozzle part can be disassembled to facilitate maintenance, cleaning and replacement; the nozzle part and the base buckle are positioned by the clamp, and the installation can be completed with bare hands without tools.
- The spray direction is 90 degrees to the installation direction. Please make sure that the installation environment meets the requirements (The base is shared with the QSH and QSF nozzles. If the spray direction is limited, QSH can be used with the QSF nozzle head)

● Under the same test conditions, the hollow cone spray has the smallest particle size, so that it is commonly applicable in gas washing and dust suppression.

- Size:
 - Drilling hole size for pipe clamp: 9.8~10mm
 - Fits pipe size: 3/4"(OD26 +/-0.2mm), 1"(OD34 +/-0.3mm)

Applications

- Cleaning: Gas, cleaning, etc.
- Cooling: Gas, liquid, air conditioning, machinery, metal, plastic molding cooling process.
- Dispersion: Humidifying, aeration, firefighting, dedust, deodorization, etc.



Appearance dimensions may vary depending on model, material. Please ask for details.

Material	Serie	Unit (mm)				Thread Type	Weight (g)
		A	B	C	D		
Plastic	3/4QSWP	24	27	14	60	3/4M	27
	1 QSWP	28	33	22	62	1	30.5

Material

- Nozzle: PP
- Clamp: Strengthened Fiberglass PP(FRPP)

How to place an order for LORRIC nozzles?

Example: 3/4" QS Clamp QSWP 6 PP

↑ Pipe Size ↑ Capacity Code ↑ Capacity Code ↑ Material

※ Standard Pressure: Column in red.
 ※ This product for spray angle 90° and 120° is able to be made to order.

Spray Angle	Capacity Code	Clamp Size		Capacity at Pressure									Average particle size (um)	Min. Free Passage (mm)	Filter mesh
		3/4	1	0.5 kgf/cm ²	0.7 kgf/cm ²	1 kgf/cm ²	1.5 kgf/cm ²	2 kgf/cm ²	2.5 kgf/cm ²	3 kgf/cm ²	4 kgf/cm ²	6 kgf/cm ²			
90°	6	v	v	1.00	1.18	1.41	1.73	2.00	2.24	2.45	2.83	3.46	220	2.2	-

※ For MPa / bar / psi units, please refer to <https://www.lorric.com/>.