

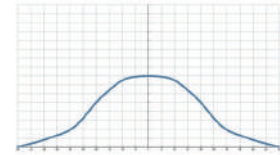
QFMF Plastic easy install full cone nozzle for precise distribution



【 Top view of nozzle spray pattern 】



【 Flow distribution 】



- Recommended working pressure: 2.0 kgf/cm²
- Flowrate tolerance: ± 5% @ 2.0 ± 0.1 kgf/cm²
- Angle tolerance: ± 5° @ 2.0 ± 0.1 kgf/cm²

Full Cone Nozzles

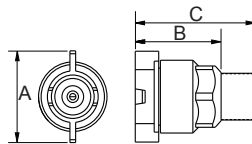
- Full cone spray.
- Adopts a Holeless multi-slotted core, possess a more uniform impact than other standard solid cone nozzles of the same type.
- Two piece nozzle design which includes nozzle and the base allows quick and accurate installation by hand. It is convenient for on-site management. Nozzle tip is secured into the base and fastened by three buckle points to avoid the nozzle tip loosening

and ensure the performance quality.

- The internal gaskets are available in various options such as EPDM, Viton and FEPM, which can be adapted to various types of chemicals. With special structural design, the nozzles can be closely attached to the base to avoid water leakage.
- According to the working environment, the base has two choices of thread type and welding type..

Applications

- Cleaning: Gas, exhaust gas, dust, cleaning device, tank cleaning, etc.
- Cooling: Gas, tank, machinery, metal, roof, etc.
- Dispersion: Humidifying, Dust Suppression.



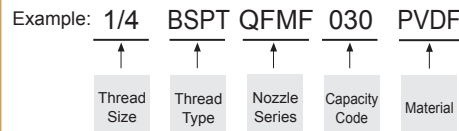
Appearance dimensions may vary depending on model, material. Please ask for details.

Material	Serie	Unit (mm)			Thread Type	Weight (g) PVDF
		A	B	C		
PVDF	1/8QFMF	32	28	39	1/8M	17.2
	1/4QFMF	32	28	43	1/4M	17.6
	3/8QFMF	32	28	43	3/8M	19.3

Material

- TIP: PVDF
- Core: PVC, PEEK
- Oring: EPDM, VITON, FEPM
- Base: PVDF, PP, U-PVC

How to place an order for LORRIC nozzles?



※ Standard Pressure: Column in red.
 ※ This product for spray angle 90° and 120° is able to be made to order.

Spray Angle	Capacity Code	Capacity at Pressure									Average particle size (um)	Min. Free Passage (mm)	Filter mesh		
		0.7 kgf/cm ²	1 kgf/cm ²	1.5 kgf/cm ²	2 kgf/cm ²	4 kgf/cm ²	6 kgf/cm ²	8 kgf/cm ²	10 kgf/cm ²	15 kgf/cm ²					
50°	010	0.59	0.71	0.87	1.00	1.41	1.73	2.00	2.24	2.74	230	0.5	100		
	015	0.89	1.06	1.30	1.50	2.12	2.60	3.00	3.35	4.11		270	0.8	50	
	020	1.18	1.41	1.73	2.00	2.83	3.46	4.00	4.47	5.48			400	1.1	-
	025	1.48	1.77	2.17	2.50	3.54	4.33	5.00	5.59	6.85				1.2	-
	}	030	1.77	2.12	2.60	3.00	4.24	5.20	6.00	6.71	8.22				1.3
		035	2.07	2.47	3.03	3.50	4.95	6.06	7.00	7.83	9.59	1.4			
		040	2.37	2.83	3.46	4.00	5.66	6.93	8.00	8.94	10.95		1.5		
		045	2.66	3.18	3.90	4.50	6.36	7.79	9.00	10.06	12.32			1.5	
90°	050	2.96	3.54	4.33	5.00	7.07	8.66	10.00	11.18	13.69	1.5				-
	055	3.25	3.89	4.76	5.50	7.78	9.53	11.00	12.30	15.06		1.5			-

※ For MPa / bar / psi units, please refer to <https://www.lorric.com/>.

Spray Angle	Capacity Code	Capacity at Pressure									Average particle size (µm)	Min. Free Passage (mm)	Filter mesh
		0.7 kgf/cm ²	1 kgf/cm ²	1.5 kgf/cm ²	2 kgf/cm ²	4 kgf/cm ²	6 kgf/cm ²	8 kgf/cm ²	10 kgf/cm ²	15 kgf/cm ²			
90°	010	0.59	0.71	0.87	1.00	1.41	1.73	2.00	2.24	2.74	-	-	-
	015	0.89	1.06	1.30	1.50	2.12	2.60	3.00	3.35	4.11	-	-	-
	020	1.18	1.41	1.73	2.00	2.83	3.46	4.00	4.47	5.48	-	-	-
	025	1.48	1.77	2.17	2.50	3.54	4.33	5.00	5.59	6.85	-	-	-
	030	1.77	2.12	2.60	3.00	4.24	5.20	6.00	6.71	8.22	-	-	-
	035	2.07	2.47	3.03	3.50	4.95	6.06	7.00	7.83	9.59	-	-	-
	040	2.37	2.83	3.46	4.00	5.66	6.93	8.00	8.94	10.95	-	-	-
	045	2.66	3.18	3.90	4.50	6.36	7.79	9.00	10.06	12.32	-	-	-
	050	2.96	3.54	4.33	5.00	7.07	8.66	10.00	11.18	13.69	-	-	-
	055	3.25	3.89	4.76	5.50	7.78	9.53	11.00	12.30	15.06	-	-	-
120°	010	0.59	0.71	0.87	1.00	1.41	1.73	2.00	2.24	2.74	-	-	-
	015	0.89	1.06	1.30	1.50	2.12	2.60	3.00	3.35	4.11	-	-	-
	020	1.18	1.41	1.73	2.00	2.83	3.46	4.00	4.47	5.48	-	-	-
	025	1.48	1.77	2.17	2.50	3.54	4.33	5.00	5.59	6.85	-	-	-
	030	1.77	2.12	2.60	3.00	4.24	5.20	6.00	6.71	8.22	-	-	-
	035	2.07	2.47	3.03	3.50	4.95	6.06	7.00	7.83	9.59	-	-	-
	040	2.37	2.83	3.46	4.00	5.66	6.93	8.00	8.94	10.95	-	-	-
	045	2.66	3.18	3.90	4.50	6.36	7.79	9.00	10.06	12.32	-	-	-
	050	2.96	3.54	4.33	5.00	7.07	8.66	10.00	11.18	13.69	-	-	-
	055	3.25	3.89	4.76	5.50	7.78	9.53	11.00	12.30	15.06	-	-	-

※ For MPa / bar / psi units, please refer to <https://www.lorric.com/>.