

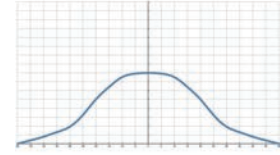
QFMF Plastic easy install full cone nozzle for precise distribution



【 Top view of nozzle spray pattern 】



【 Flow distribution 】



- Recommended working pressure: 2.0 kgf/cm²
- Flowrate tolerance: ± 5% @ 2.0 ± 0.1 kgf/cm²
- Angle tolerance: ± 5° @ 2.0 ± 0.1 kgf/cm²

Full Cone Nozzles

Features

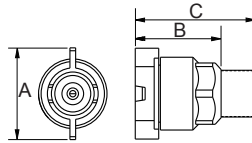
- Full cone spray.
- Adopts a Holeless multi-slotted core, possess a more uniform impact than other standard solid cone nozzles of the same type.
- Two piece nozzle design which includes nozzle and the body allows quick and accurate installation by hand. It is convenient for on-site management. Nozzle tip is secured into the body and fastened by three buckle points to avoid the nozzle tip loosening

and ensure the performance quality.

- The internal gaskets are available in various options such as EPDM, Viton and Viton-F, which can be adapted to various types of chemicals. With special structural design, the nozzles can be closely attached to the base to avoid water leakage.

Applications

- Cleaning: Gas, exhaust gas, dust, cleaning device, tank cleaning, etc.
- Cooling: Gas, tank, machinery, metal, roof, etc.
- Dispersion: Humidifying, Dust Suppression.



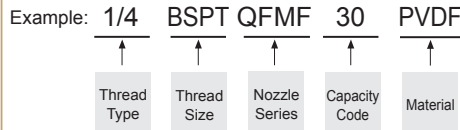
Appearance dimensions may vary depending on model, material. Please ask for details.

Material	Serie	Unit (mm)			Thread Type	Weight (g) PVDF
		A	B	C		
PVDF	1/8QFMF	32	28	39	1/8M	17.2
	1/4QFMF	32	28	43	1/4M	17.6
	3/8QFMF	32	28	43	3/8M	19.3

Material

- TIP: PVDF
- Core: U-PVC, PEEK
- Oring: EPDM, VITON
- Body: PVDF, PP, U-PVC (QFSA, QFWG)

How to place an order for LORRIC nozzles?



※ Standard Pressure: Column in red.
 ※ This product for spray angle 90° and 120° is able to be made to order.

Spray Angle	Capacity Code	Capacity at Pressure									Average particle size (um)	Min. Free Passage (mm)	Filter mesh	
		0.7 kgf/cm ²	1 kgf/cm ²	1.5 kgf/cm ²	2 kgf/cm ²	4 kgf/cm ²	6 kgf/cm ²	8 kgf/cm ²	10 kgf/cm ²	15 kgf/cm ²				
50°	10	0.59	0.71	0.87	1.00	1.41	1.73	2.00	2.24	2.74	230	0.5	100	
	15	0.89	1.06	1.30	1.50	2.12	2.60	3.00	3.35	4.11		0.8	50	
	20	1.18	1.41	1.73	2.00	2.83	3.46	4.00	4.47	5.48		270	1.1	-
	25	1.48	1.77	2.17	2.50	3.54	4.33	5.00	5.59	6.85			1.2	-
	30	1.77	2.12	2.60	3.00	4.24	5.20	6.00	6.71	8.22			1.3	-
	35	2.07	2.47	3.03	3.50	4.95	6.06	7.00	7.83	9.59			1.4	-
	40	2.37	2.83	3.46	4.00	5.66	6.93	8.00	8.94	10.95		400	1.5	-
	45	2.66	3.18	3.90	4.50	6.36	7.79	9.00	10.06	12.32			1.5	-
90°	50	2.96	3.54	4.33	5.00	7.07	8.66	10.00	11.18	13.69	400	1.5	-	
	55	3.25	3.89	4.76	5.50	7.78	9.53	11.00	12.30	15.06		1.5	-	

※ For MPa / bar / psi units, please refer to LORRIC.com.

Spray Angle	Capacity Code	Capacity at Pressure									Average particle size (um)	Min. Free Passage (mm)	Filter mesh
		0.7 kgf/cm ²	1 kgf/cm ²	1.5 kgf/cm ²	2 kgf/cm ²	4 kgf/cm ²	6 kgf/cm ²	8 kgf/cm ²	10 kgf/cm ²	15 kgf/cm ²			
90°	10	0.59	0.71	0.87	1.00	1.41	1.73	2.00	2.24	2.74	-	-	-
	15	0.89	1.06	1.30	1.50	2.12	2.60	3.00	3.35	4.11	-	-	-
	20	1.18	1.41	1.73	2.00	2.83	3.46	4.00	4.47	5.48	-	-	-
	25	1.48	1.77	2.17	2.50	3.54	4.33	5.00	5.59	6.85	-	-	-
	30	1.77	2.12	2.60	3.00	4.24	5.20	6.00	6.71	8.22	-	-	-
	35	2.07	2.47	3.03	3.50	4.95	6.06	7.00	7.83	9.59	-	-	-
	40	2.37	2.83	3.46	4.00	5.66	6.93	8.00	8.94	10.95	-	-	-
	45	2.66	3.18	3.90	4.50	6.36	7.79	9.00	10.06	12.32	-	-	-
	50	2.96	3.54	4.33	5.00	7.07	8.66	10.00	11.18	13.69	-	-	-
	55	3.25	3.89	4.76	5.50	7.78	9.53	11.00	12.30	15.06	-	-	-
120°	10	0.59	0.71	0.87	1.00	1.41	1.73	2.00	2.24	2.74	-	-	-
	15	0.89	1.06	1.30	1.50	2.12	2.60	3.00	3.35	4.11	-	-	-
	20	1.18	1.41	1.73	2.00	2.83	3.46	4.00	4.47	5.48	-	-	-
	25	1.48	1.77	2.17	2.50	3.54	4.33	5.00	5.59	6.85	-	-	-
	30	1.77	2.12	2.60	3.00	4.24	5.20	6.00	6.71	8.22	-	-	-
	35	2.07	2.47	3.03	3.50	4.95	6.06	7.00	7.83	9.59	-	-	-
	40	2.37	2.83	3.46	4.00	5.66	6.93	8.00	8.94	10.95	-	-	-
	45	2.66	3.18	3.90	4.50	6.36	7.79	9.00	10.06	12.32	-	-	-
	50	2.96	3.54	4.33	5.00	7.07	8.66	10.00	11.18	13.69	-	-	-
	55	3.25	3.89	4.76	5.50	7.78	9.53	11.00	12.30	15.06	-	-	-

※ For MPa / bar / psi units, please refer to LORRIC.com.