

F311- New 195mm middle size pipe size 1/2"-1" F311 series



Product Features · Use

- 4 design innovations to improve usability:
New body design: Decreases the vibration when working which stabilises flow distribution./ New indicator design: Easily adjustable and positionable./ Thickened threads for caps: Caps are easy to be locked even under bad concentricity./ Models with and without guide rods are able to share the same adaptors.
- Patented dual-indicator design for easy and clear flow range management.
- Laser engraved degree scales provide better readability and longer life.
- Available in customizable units, temperature, and molecular weight.

Standard Specs

- Model: F311 PSU
- Adaptor Size: 1/2", 3/4", 1"
- Applicable Fluid: Liquid
- Flow direction: From the bottom up
- Engraved degree scales: Laser engraved degree scales
- Fluid Temperature: 50°C (Standard: UPVC adaptor)
60°C (PP adaptor)
- Working Pressure: 5.0 kg/cm²
- Full Scale Accuracy: ±5% F.S.
- Product Material
 - Body - PSU
 - Float - Stainless 316, Hastelloy C
 - Guide Rod - Stainless 316
 - Guide Rod Bottom - PP
 - Adaptor - Welding Type: UPVC
 - Male, Female Thread: UPVC, PP
 - Butt-fusion Adaptor: PP
 - Union Nuts - UPVC
 - O-ring - EPDM, VITON
- Adaptor Material

Welding Type, Male Thread, Female Thread, Butt-fusion Adaptor

※ BSPT is standard thread type. NPT is available for custom order.

Scale Range

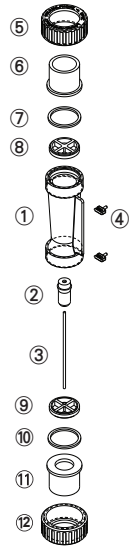
Product Code	Scale Range※ 1 ※ 2 (L/min)
F311 - 80LPM	23-80 / S, H
F311 - 100LPM	20-100 / S, H

※ 1. Liquid flow meters are calibrated for 20°C water.
 ※ 2. / "float material, S- Stainless 316, H- Hastelloy C.

Maximum working temperature for different adaptor materials

Adaptor Types	Maximum working temperature materials	
	~ 50°C	~ 60°C
Welding Type	UPVC	-
Male / Female Thread	UPVC	PP
Butt-fusion Adaptor	PP	PP

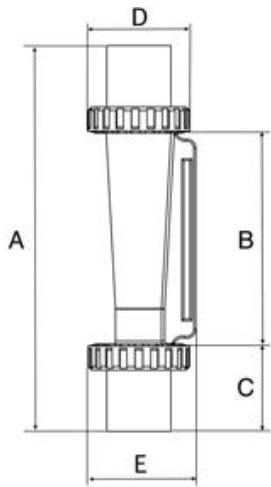
Parts Material



No.	Series	Material (Main material)* 1			
		1	2	3	4
1	Body	PSU	PSU	PSU	PSU
2	Float	S316	S316	S316	S316
3	Guide Rod	S316	S316	S316	S316
4	Pointer	PP	PP	PP	PP
5,12	Union Nuts	UPVC	UPVC	UPVC	UPVC
6,11	Adaptor	UPVC	UPVC	PP**2	PP**2
7,10	O-ring	EPDM	VITON	VITON	VITON
8,9	Guide Rod Bottom	PP	PP	PP	PP

※ 1. Material for different parts is optional for each flowmeter.
 ※ 2. For thread and welding adaptor only.

Parts Size



Adaptor Material	A	B	C	D	E
1" Male Thread	211	93	59	61	67
1" Female Thread	210	93	58.5	61	67
1" JIS	196	93	51.5	61	67
3/4" Male Thread	197	93	52	61	67
3/4" Female Thread	212	93	59.5	61	67
3/4" JIS	200	93	53.5	61	67
1/2" JIS	190	93	48.5	61	67
PP OD33 ID25.3	194	93	50.5	61	67

Unit: mm

Specification inquiry (F311)

※ Contact us with below information.

- Fluid - Water Other _____
- Specific gravity - Standard-1.0 Other _____
- Pressure - Standard-5.0kg/cm² Other ___ kg/cm²
- Temperature - Normal temperature Other ___ °C
- Scale Range - _____ L/min ~ _____ L/min
- Adaptor Size - 1" JIS
 Other _____
- Adaptor Material
 Welding Type Male Thread
 Female Thread Butt-fusion Adaptor
 Other _____
- Inductor - Yes No
- Other - _____